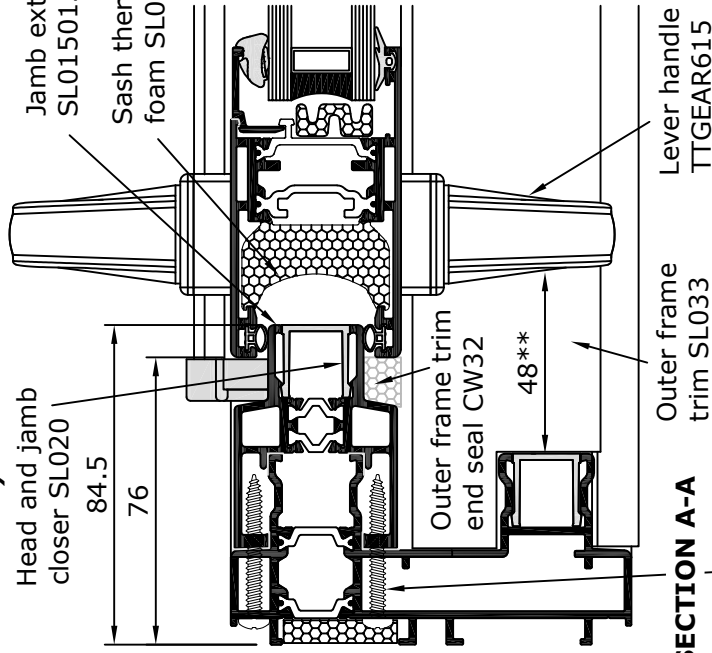


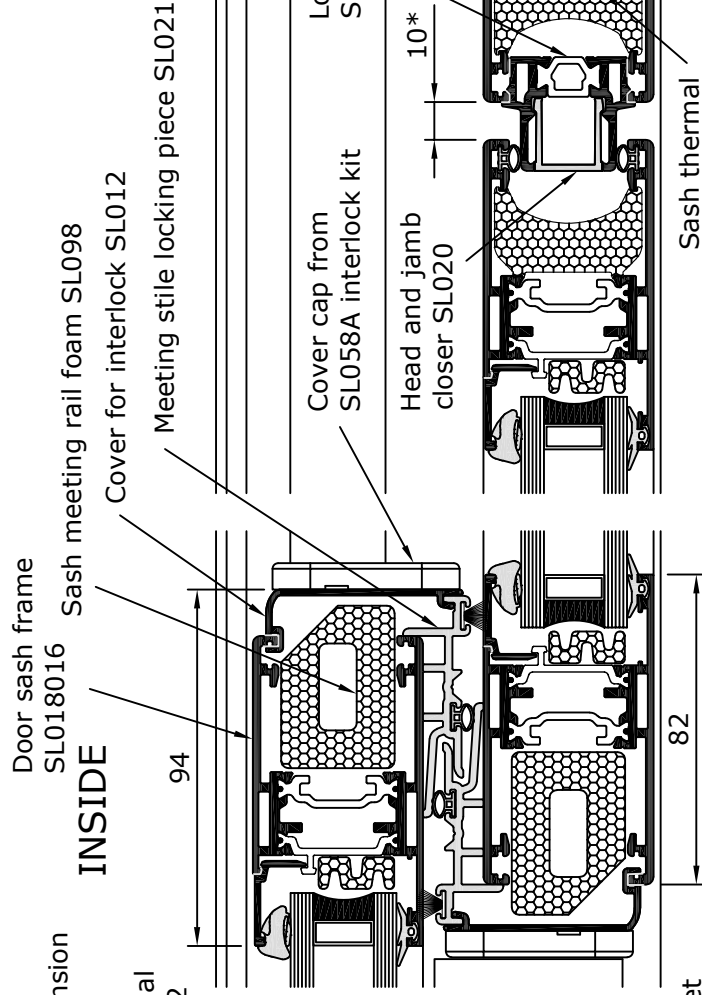
General Arrangement

Lift and Slide / Fixed / Fixed (Inside pane sliding with internal and external handles)



SECTION A-A

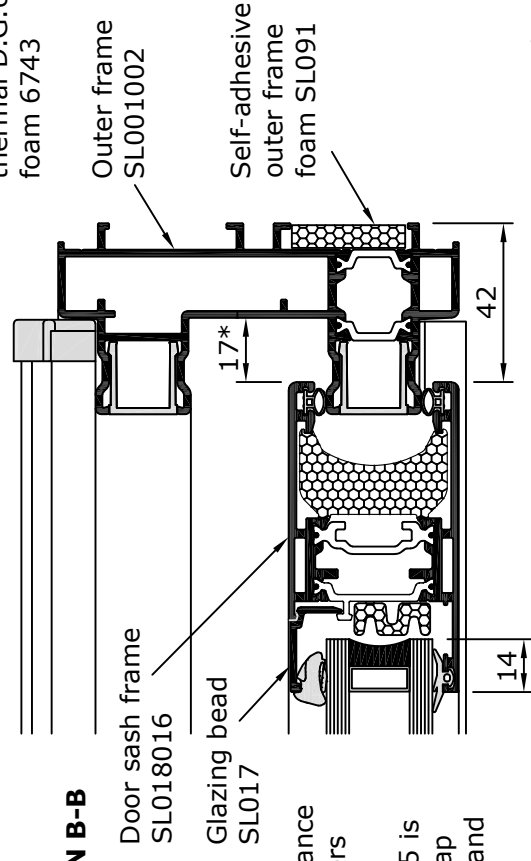
No 8 x 38mm pan head self tapping screws 7235 positioned 75mm from the corners at maximum 300mm centres.



Sash thermal foam SL092

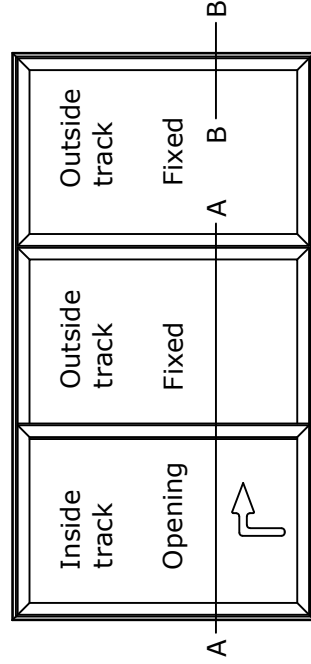
Self adhesive thermal D.G.U. foam 6743

SECTION B-B



* Tolerance to be in accordance with gearing manufacturers recommendations.

** Jamb extension SL015015 is required to avoid fingertrap between external handle and outer frame.



Scale 1:2

OUTSIDE